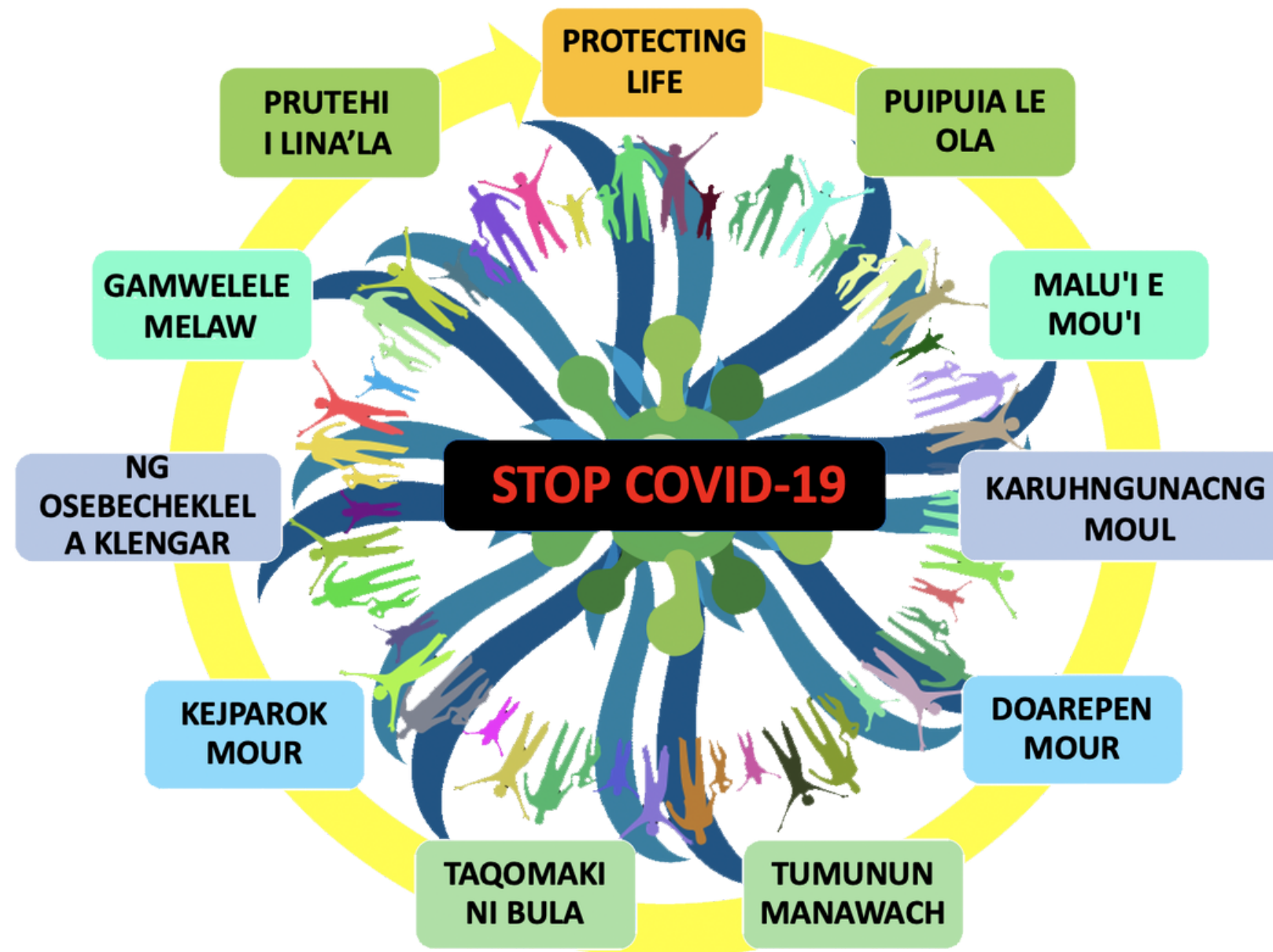


# PUIPUIA LE OLA

## Protecting Life Study



# PRESENTERS

**Nicole Yuzon**



Research Associate  
UH Mānoa Graduate

**Jade Nobuyuri Ching**



Research Assistant  
UH Mānoa Student

**Prieta Edwin**



Field Research Assistant  
UH Mānoa Student

**Binasia Joseph**



Field Research Assistant  
UH Mānoa Student

**Arasi Tuiolemotu**



Field Research Assistant  
UH Mānoa Student

# THE PROBLEM

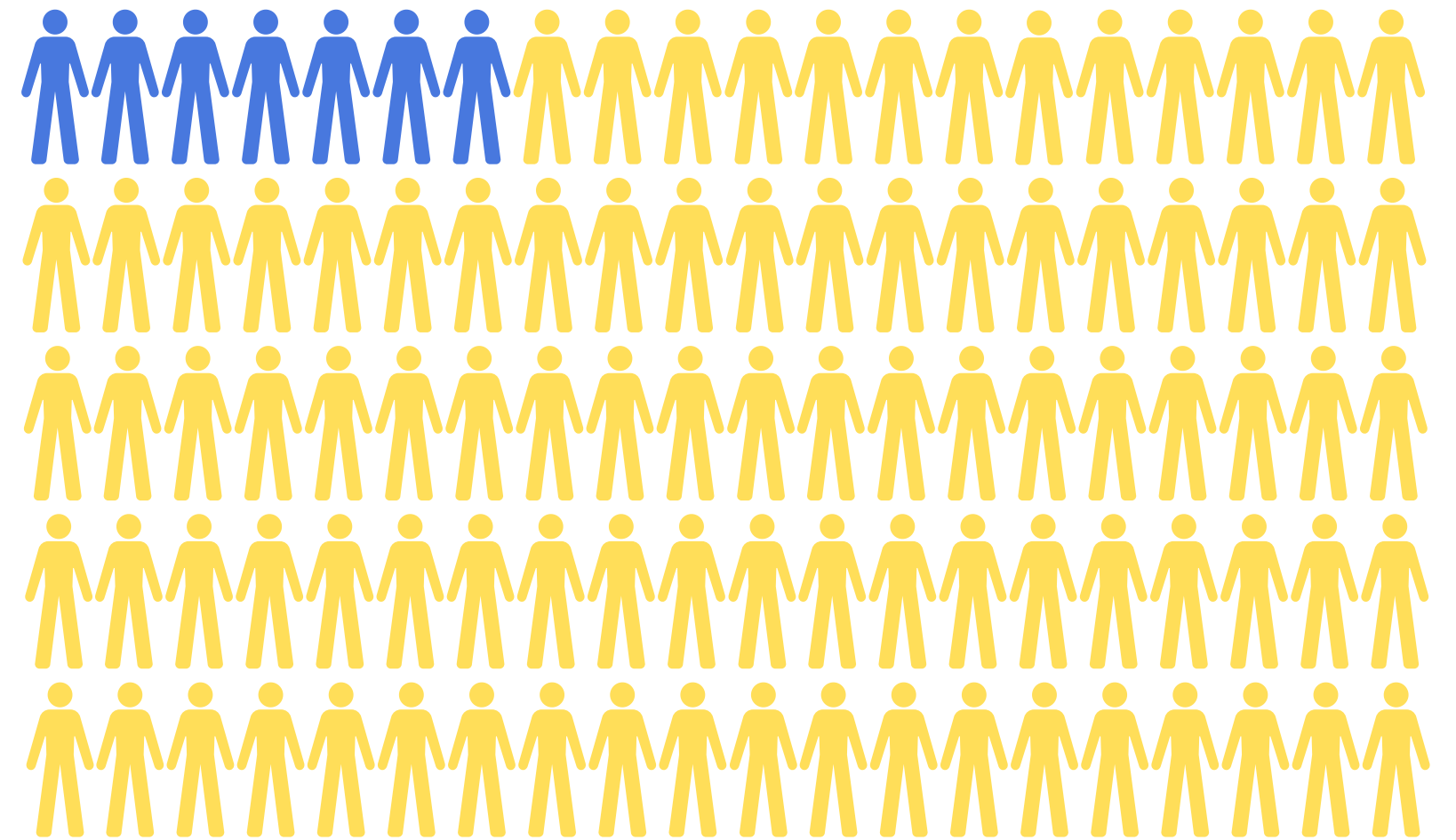
# PACIFIC ISLANDERS IN HAWAI'I



# Pacific Islanders in Hawai'i



# Pacific Islander COVID-19 cases

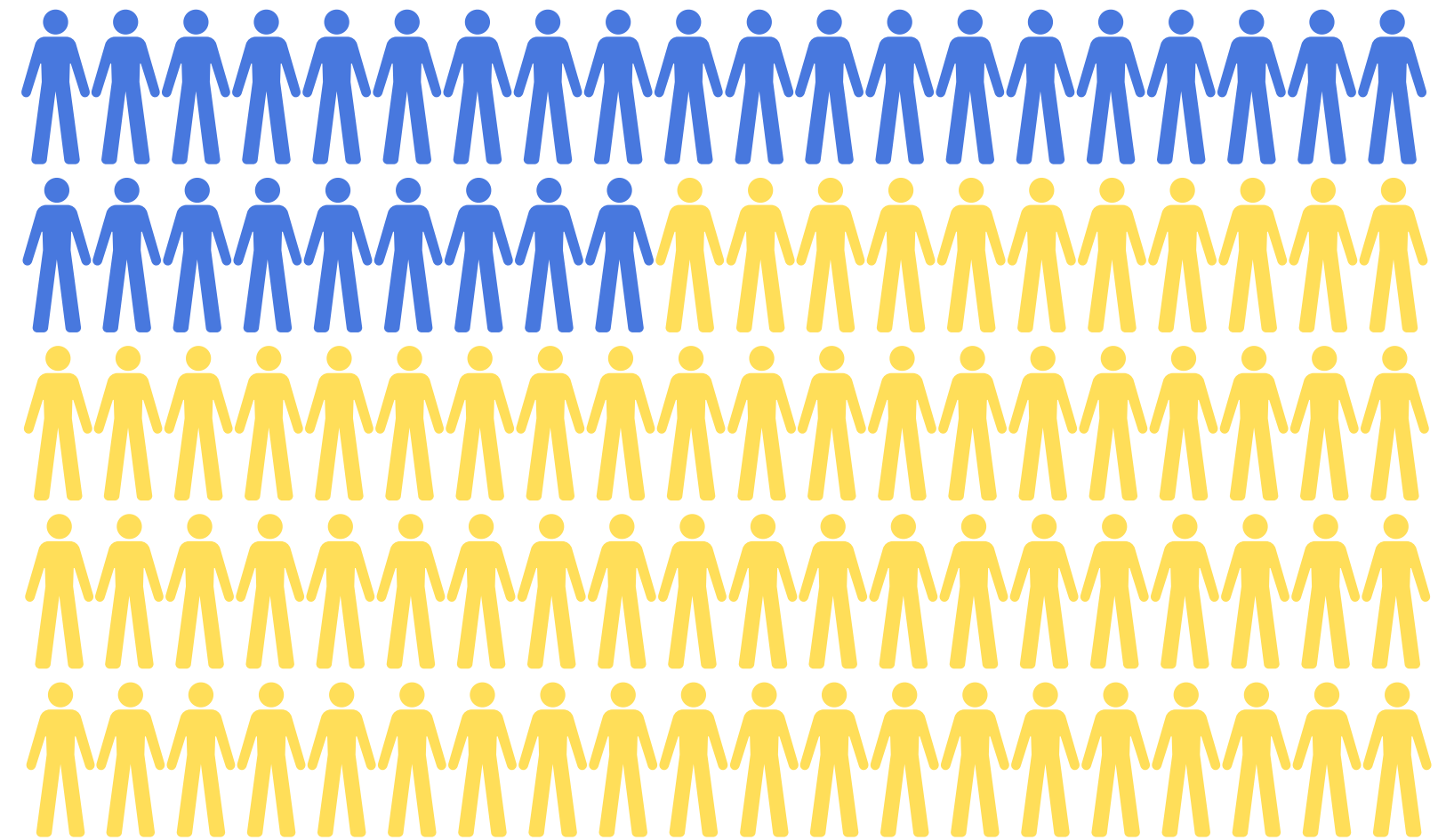


Data as of  
September 2022

# Pacific Islanders in Hawai'i



# Pacific Islander COVID-19 hospitalizations

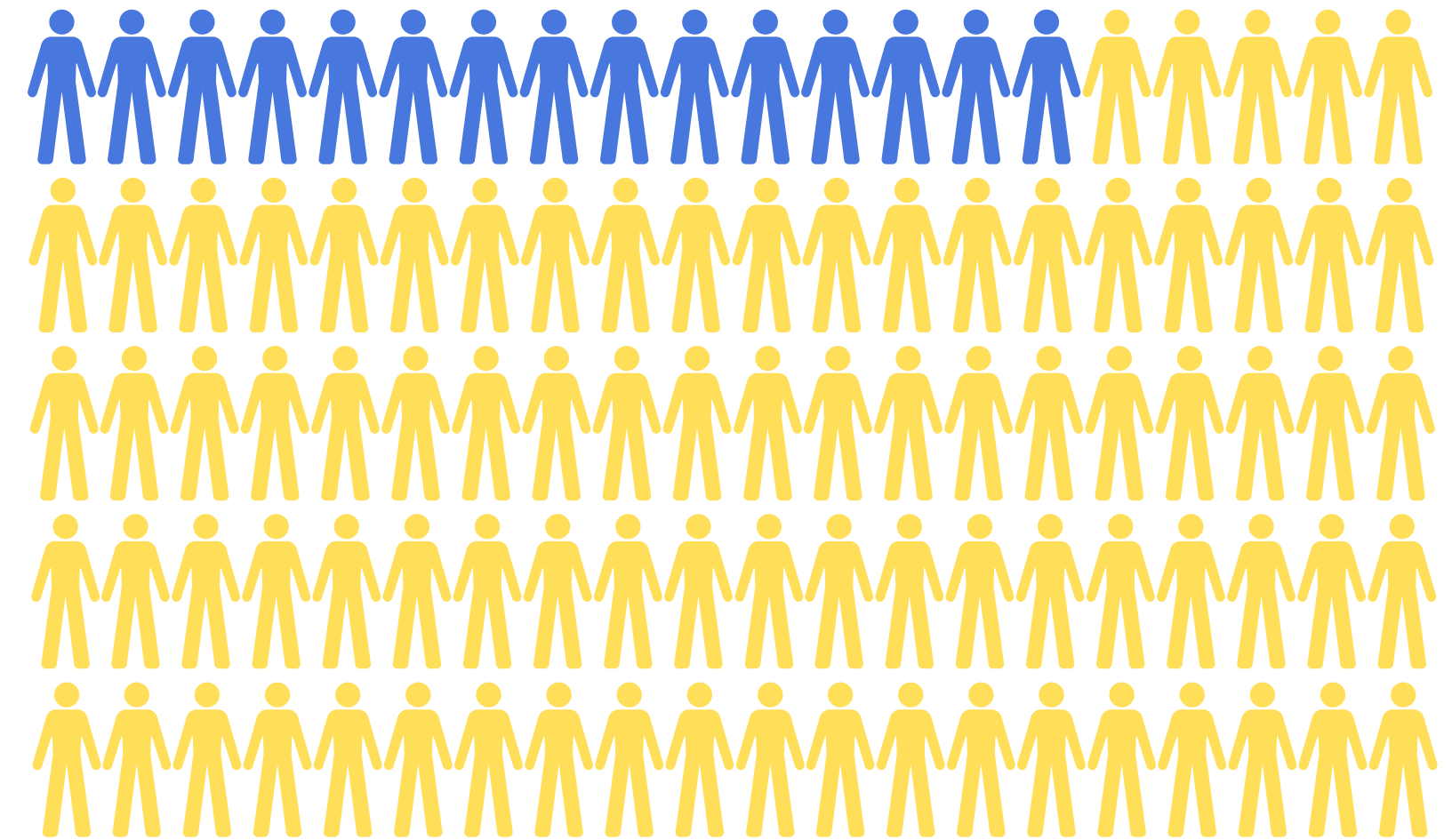


Data as of  
May 2021

# Pacific Islanders in Hawai'i



# Pacific Islander COVID-19 deaths



Data as of  
September 2022

# PURPOSE OF THE STUDY

1. Reduce COVID-19 disparities in Pacific Islander communities
2. Protect Pacific Islander communities against COVID-19



# METHODOLOGY

①

**Pre-Survey**

②

**COVID-19  
Testing**

③

**Education**

④

**Post-Survey**

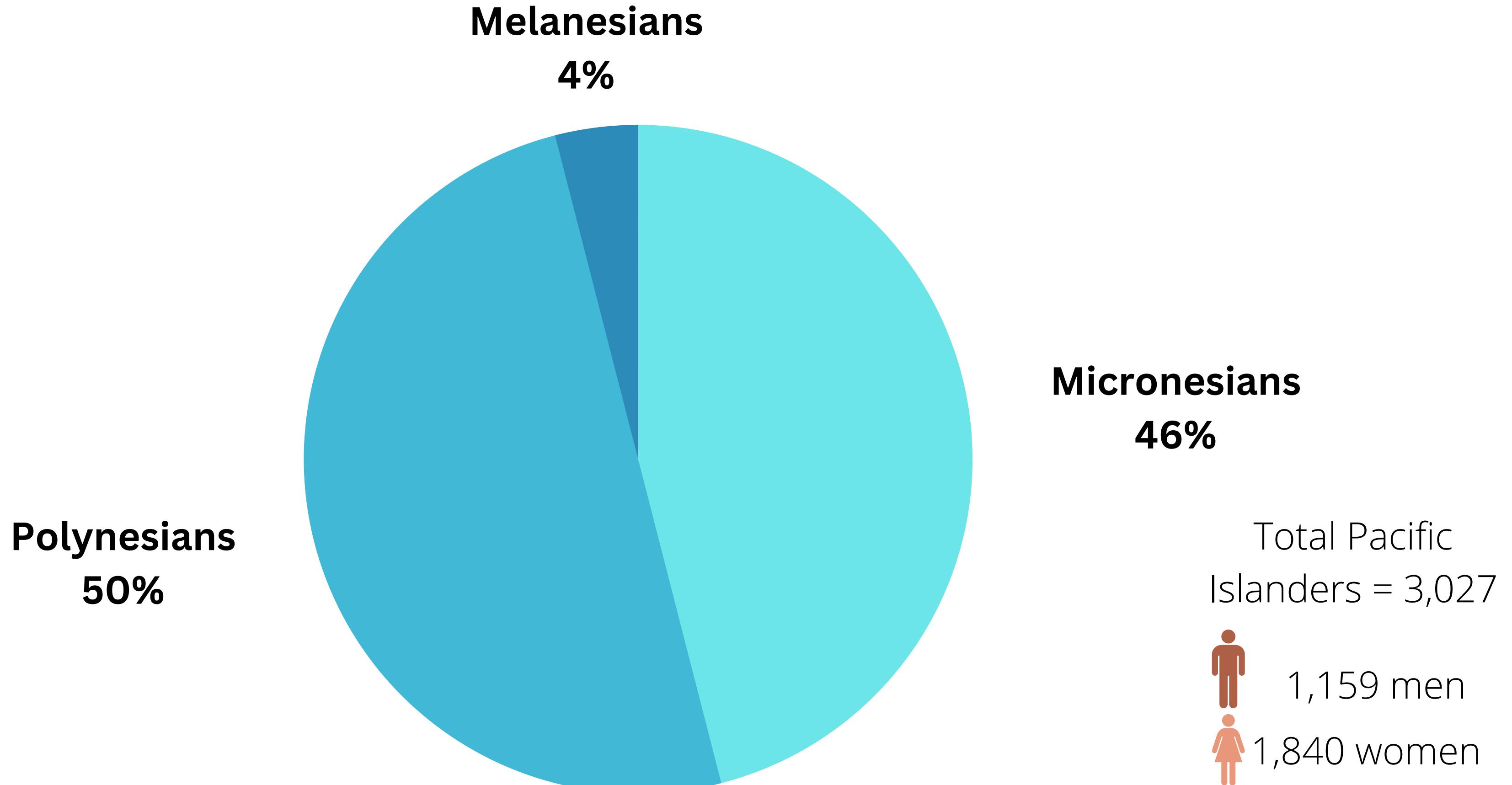
⑤

**Data  
Dissemination**

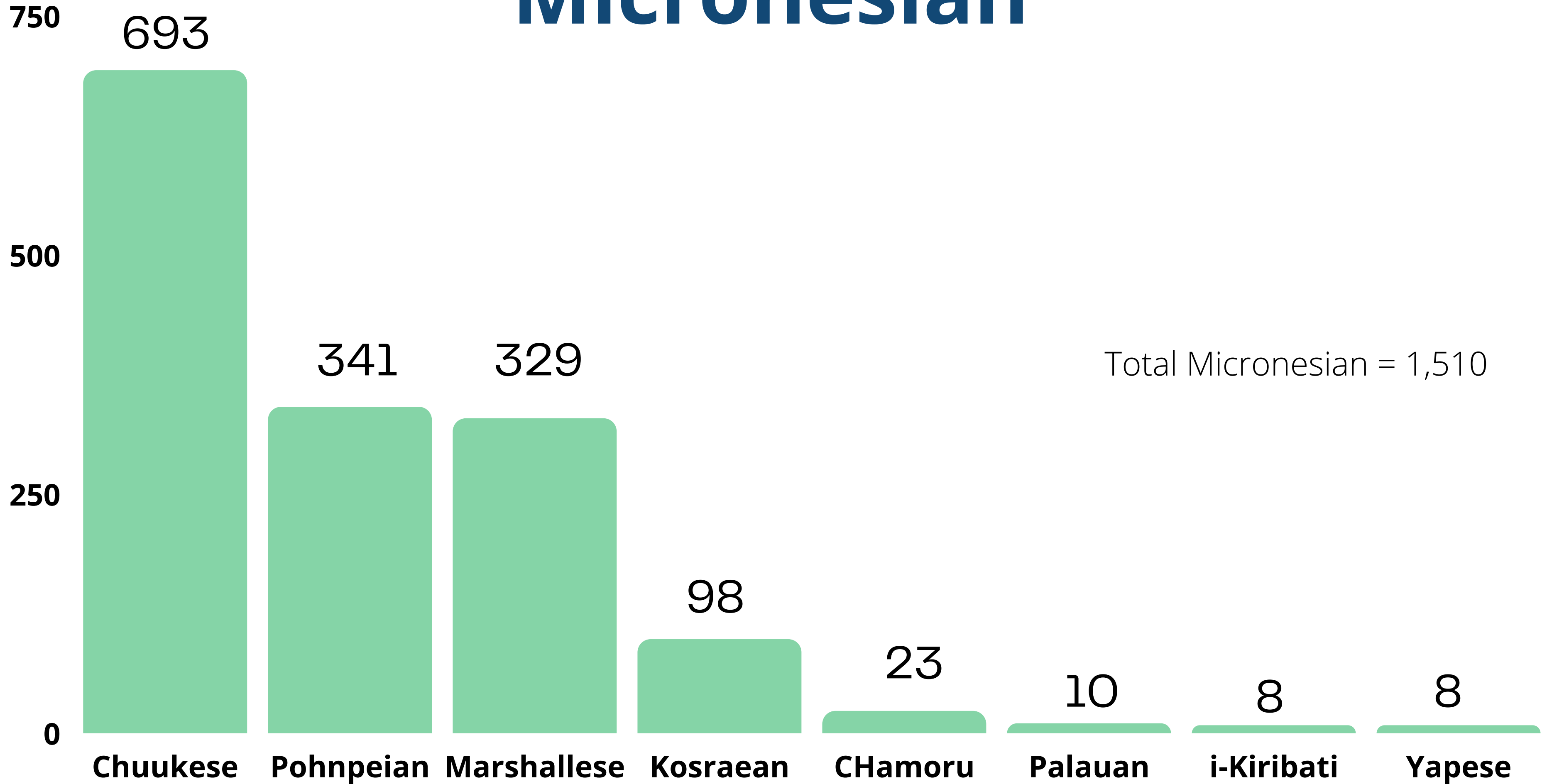
# STUDY RESULTS



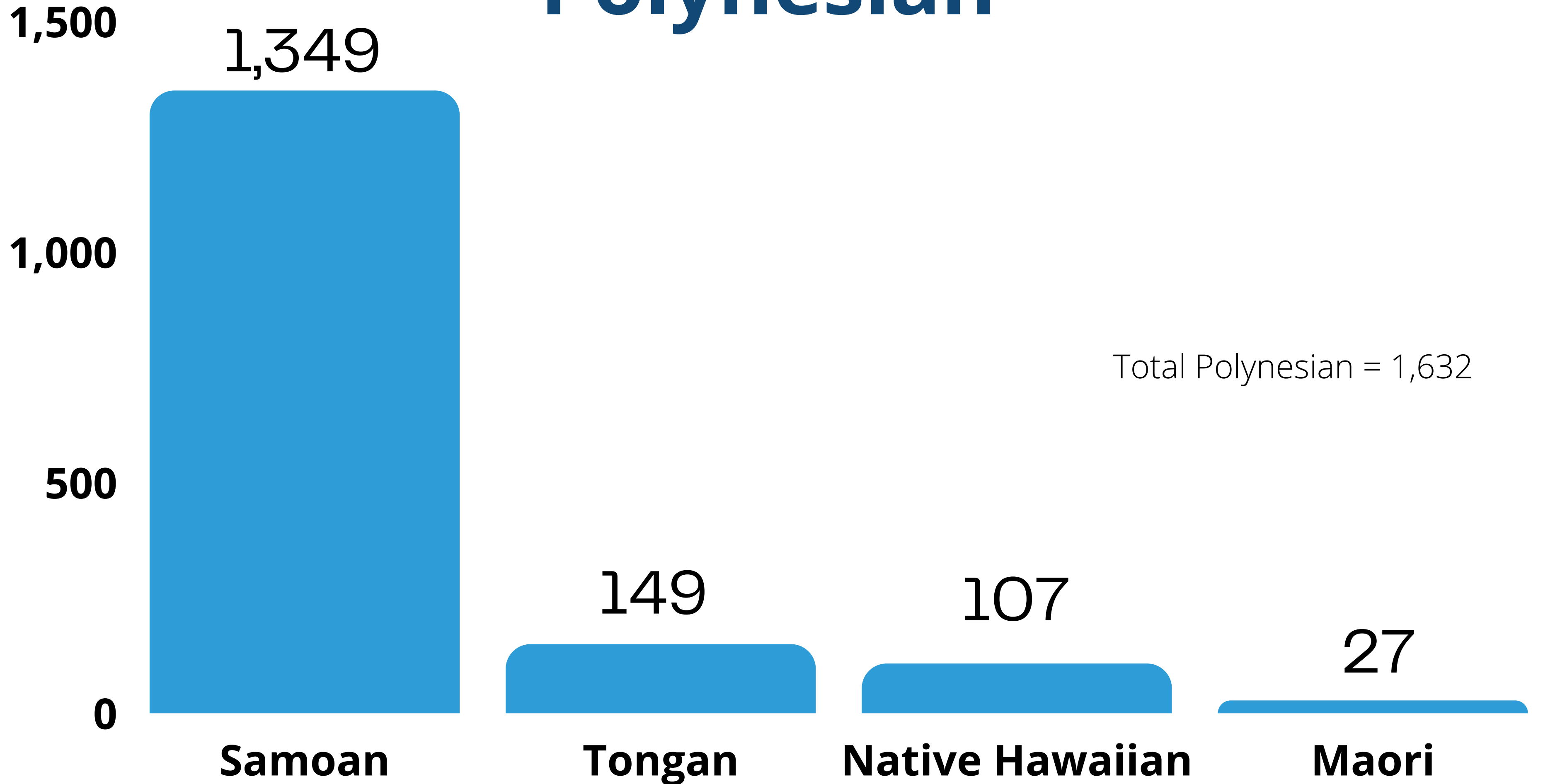
# Study Participants



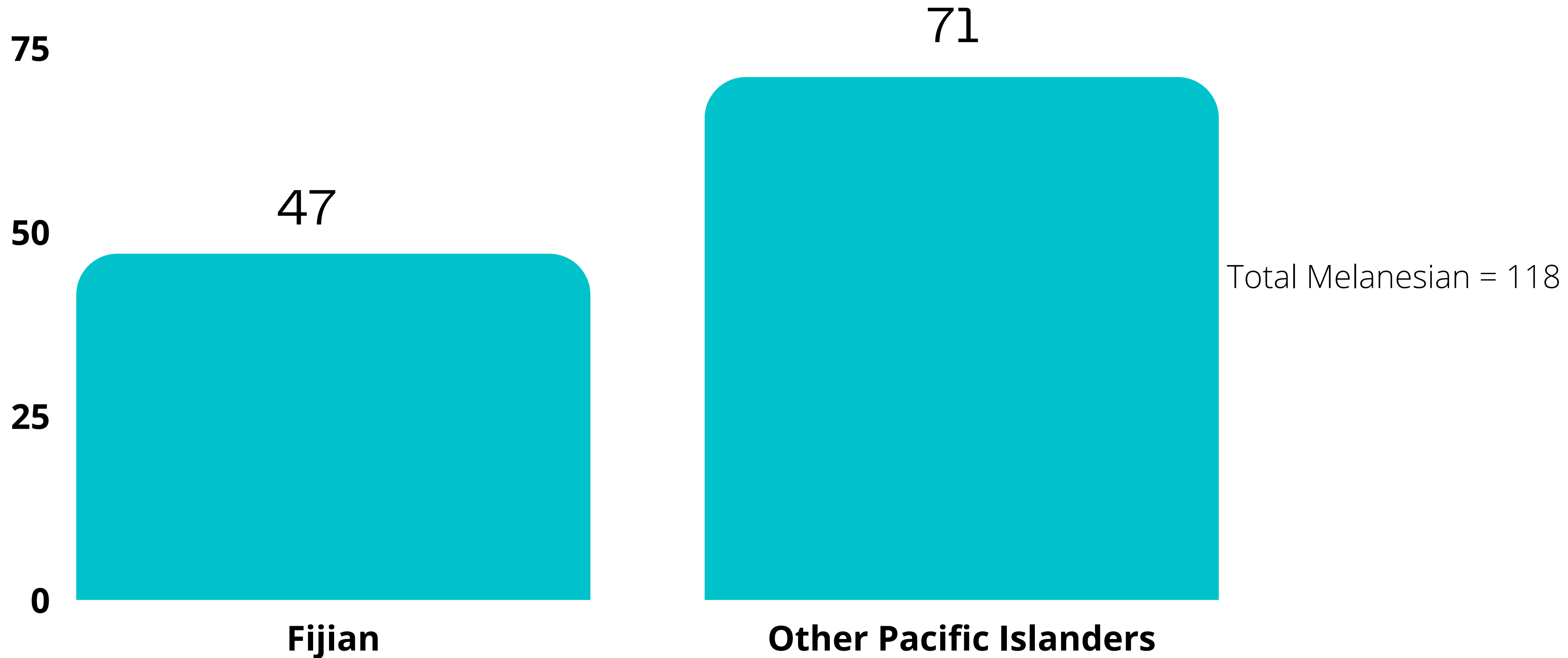
# Micronesian



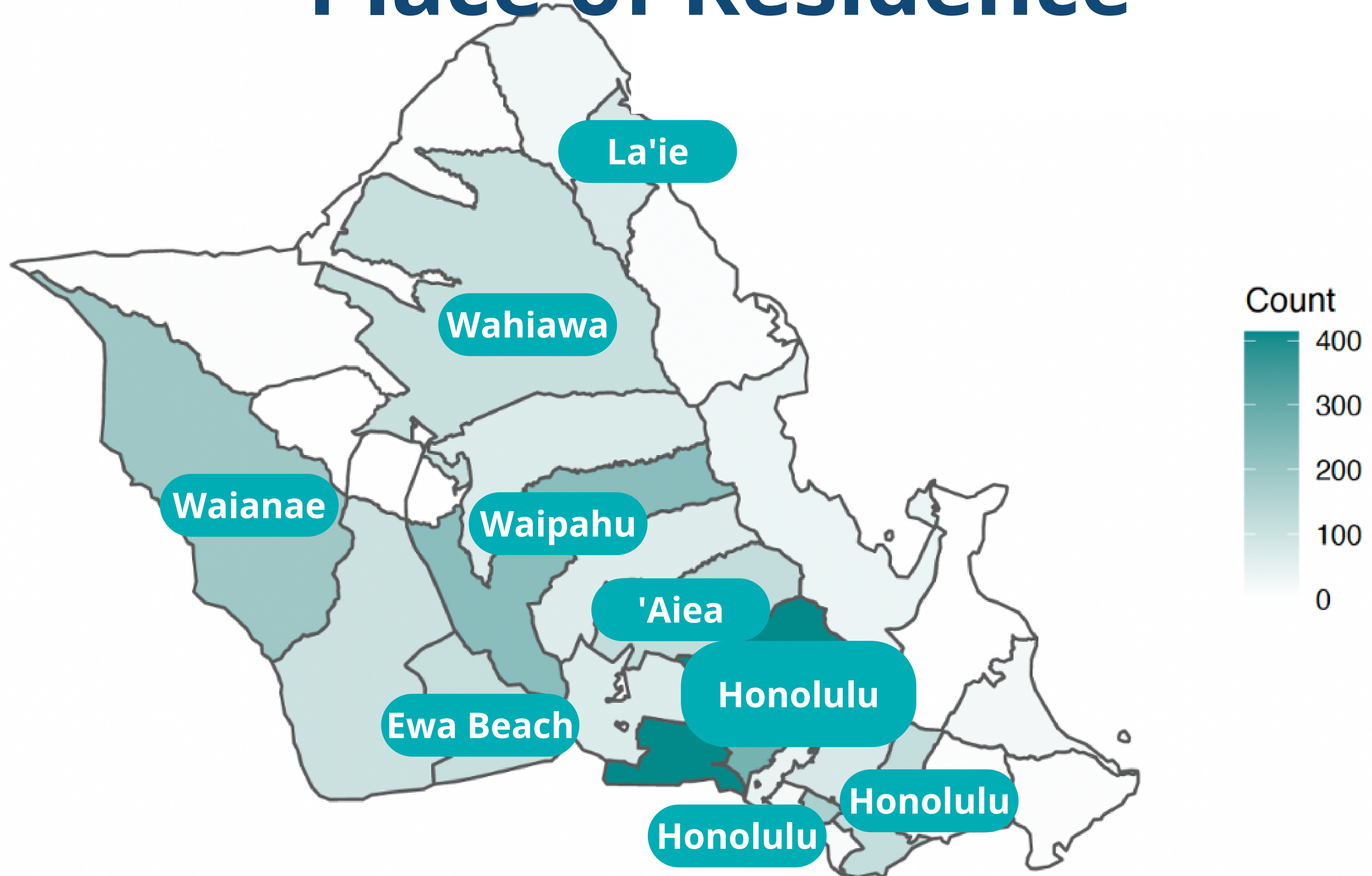
# Polynesian



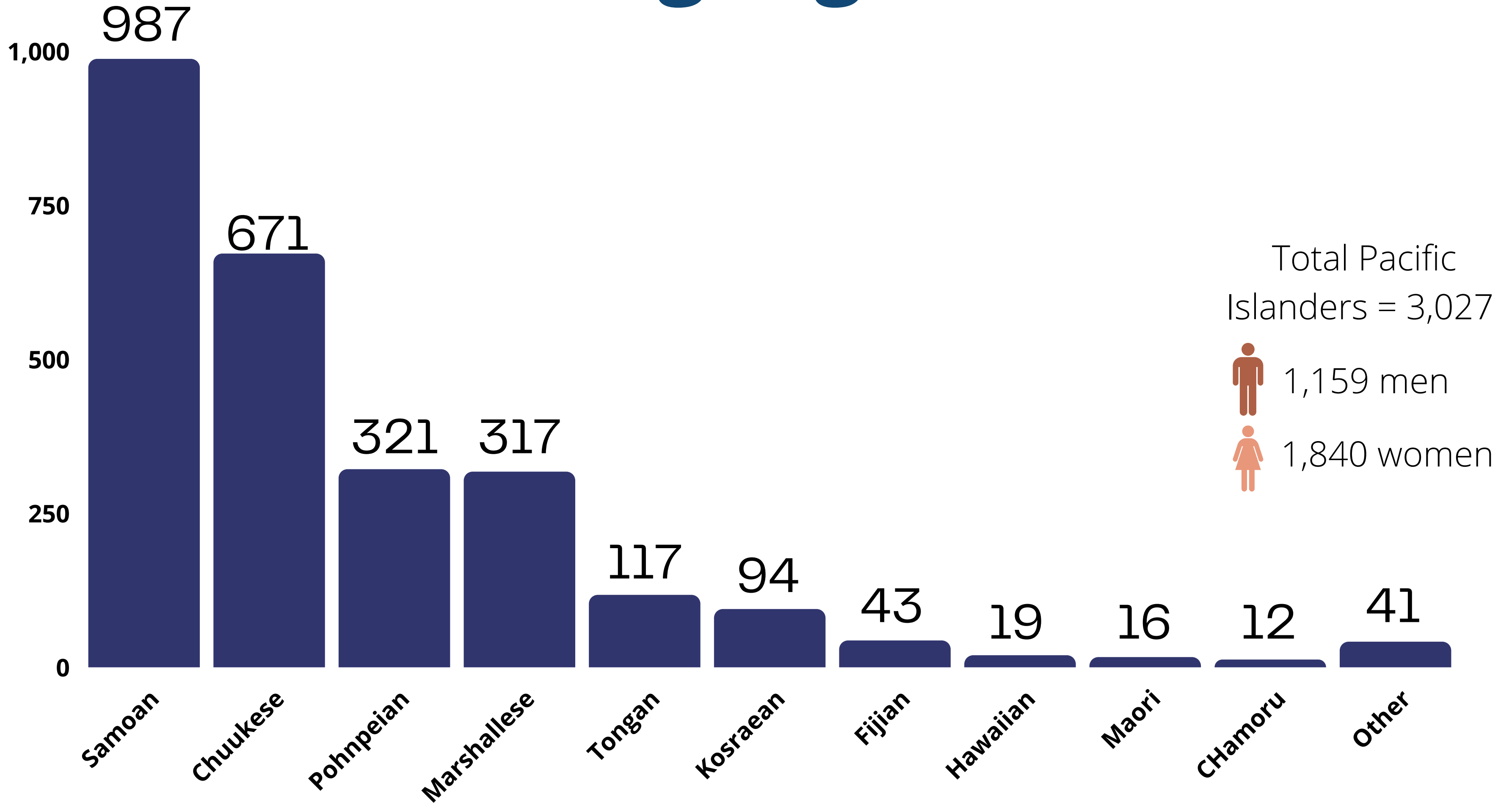
# Melanesian



# Place of Residence

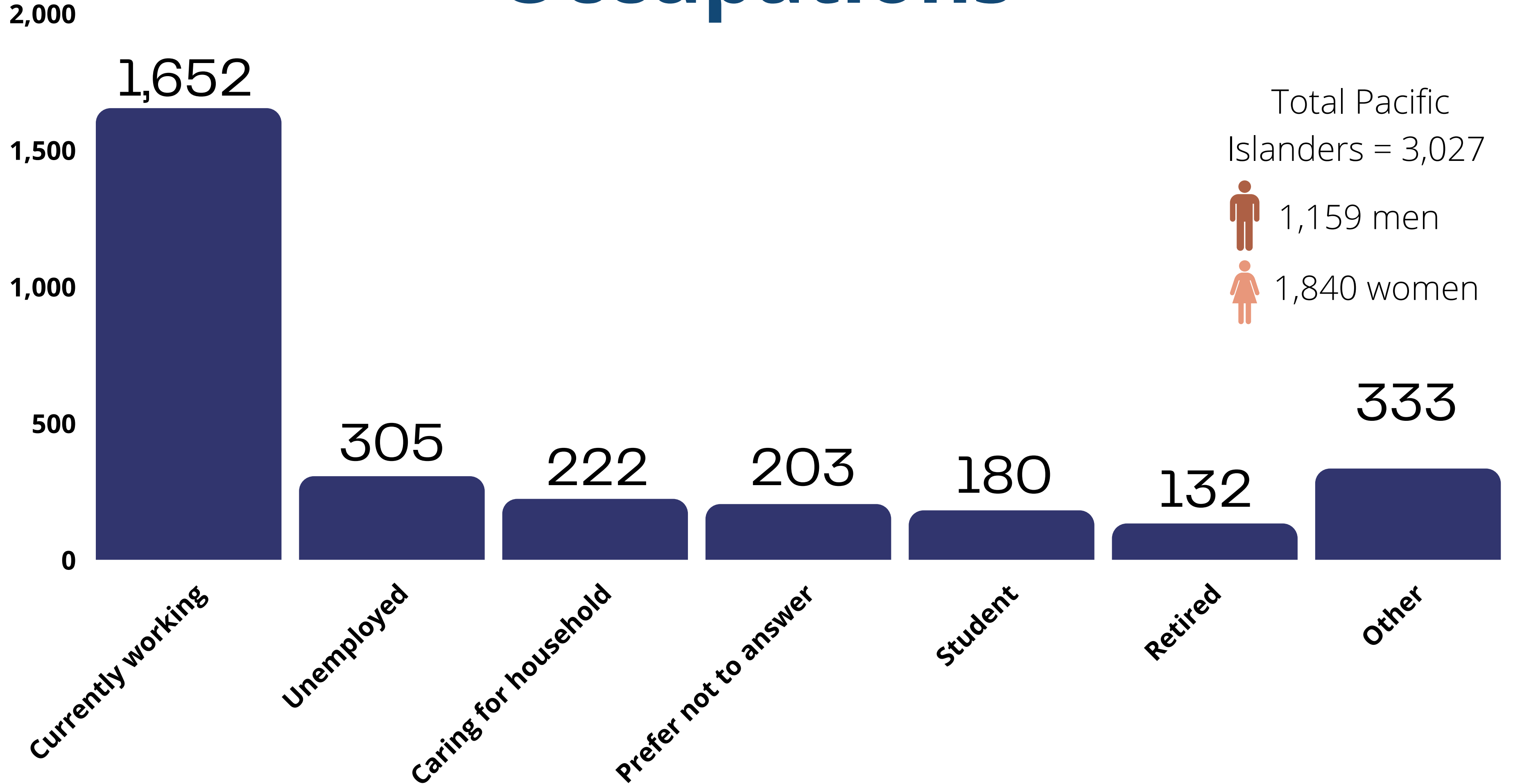


# Languages

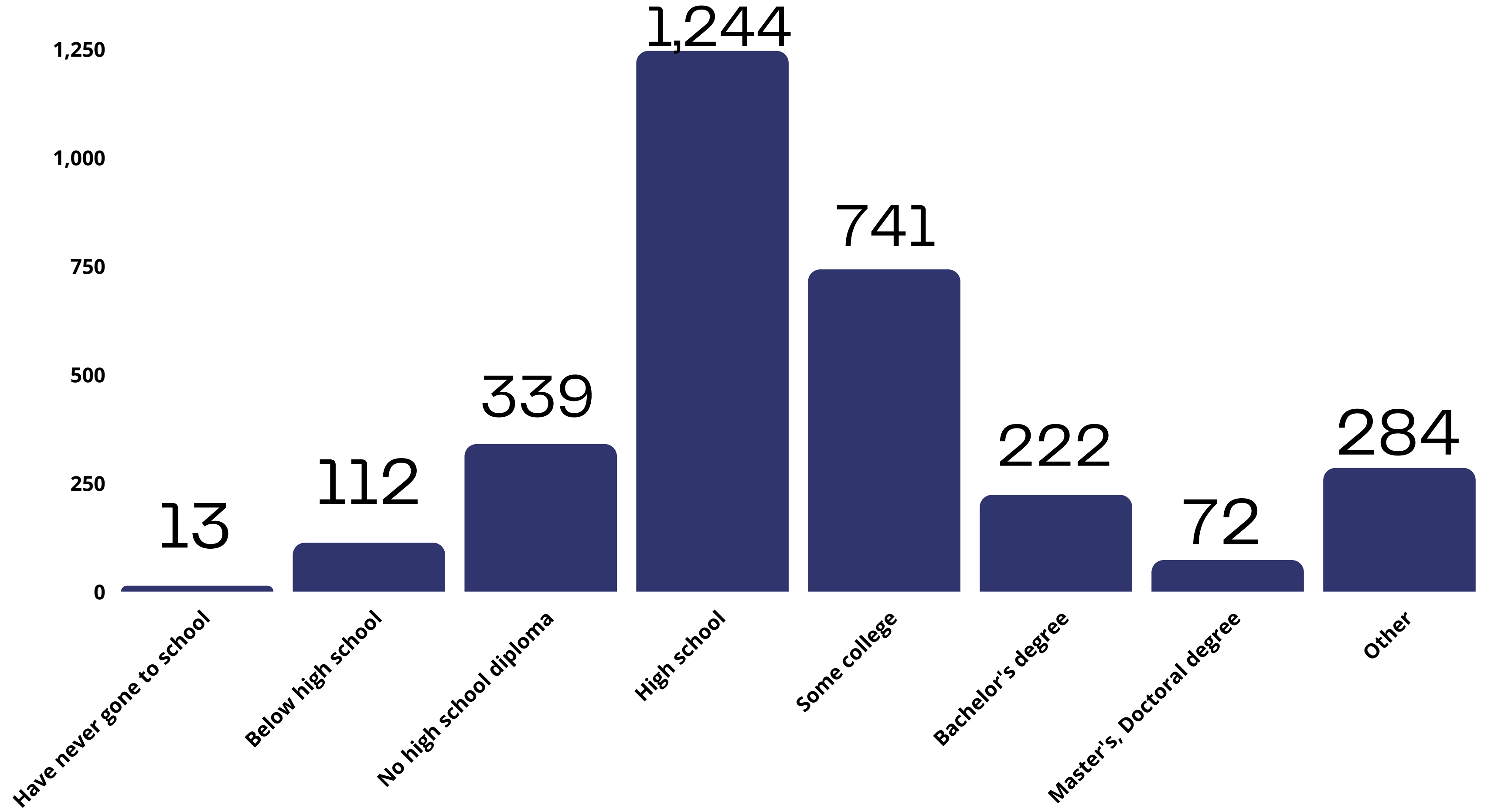




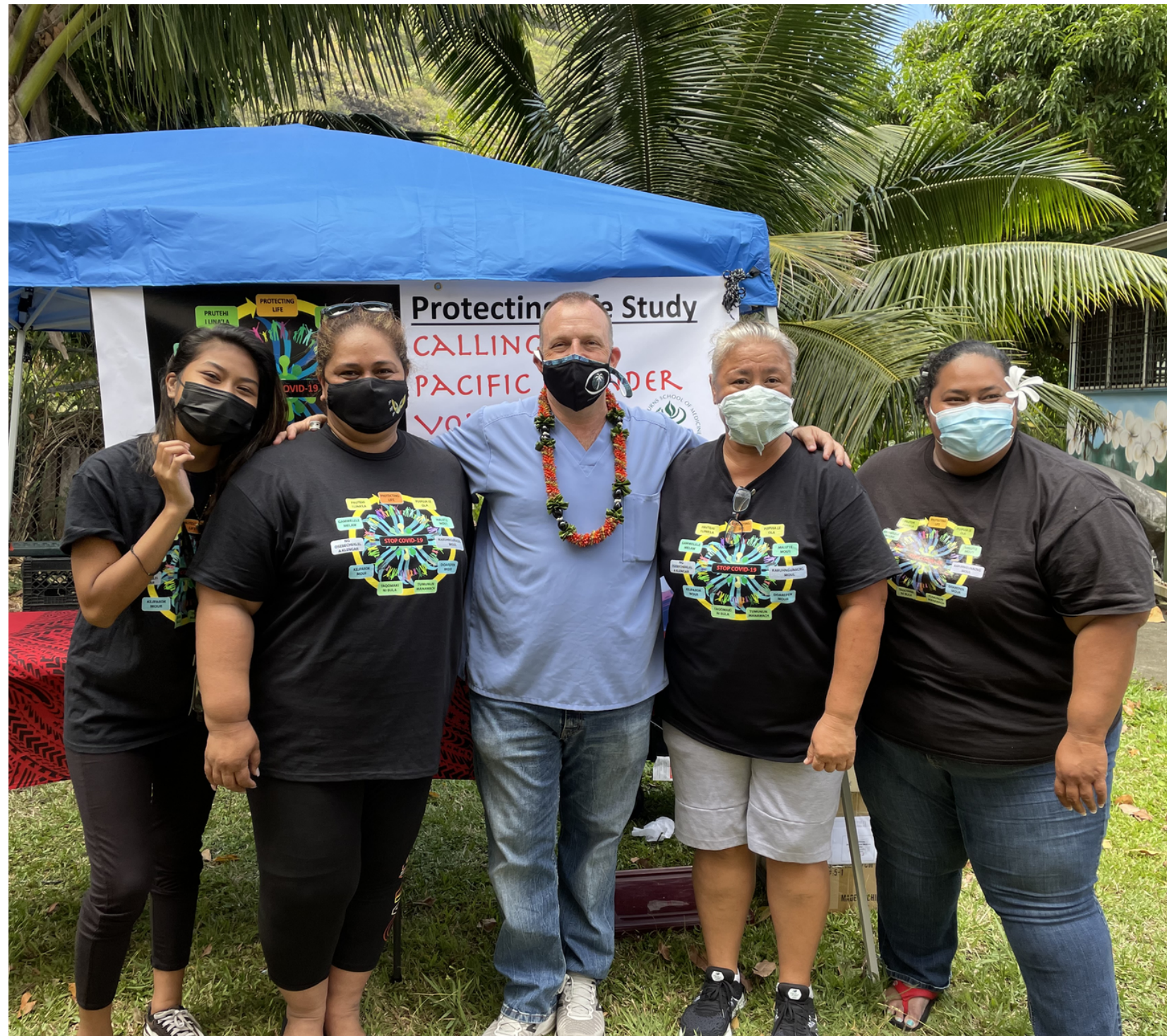
# Occupations



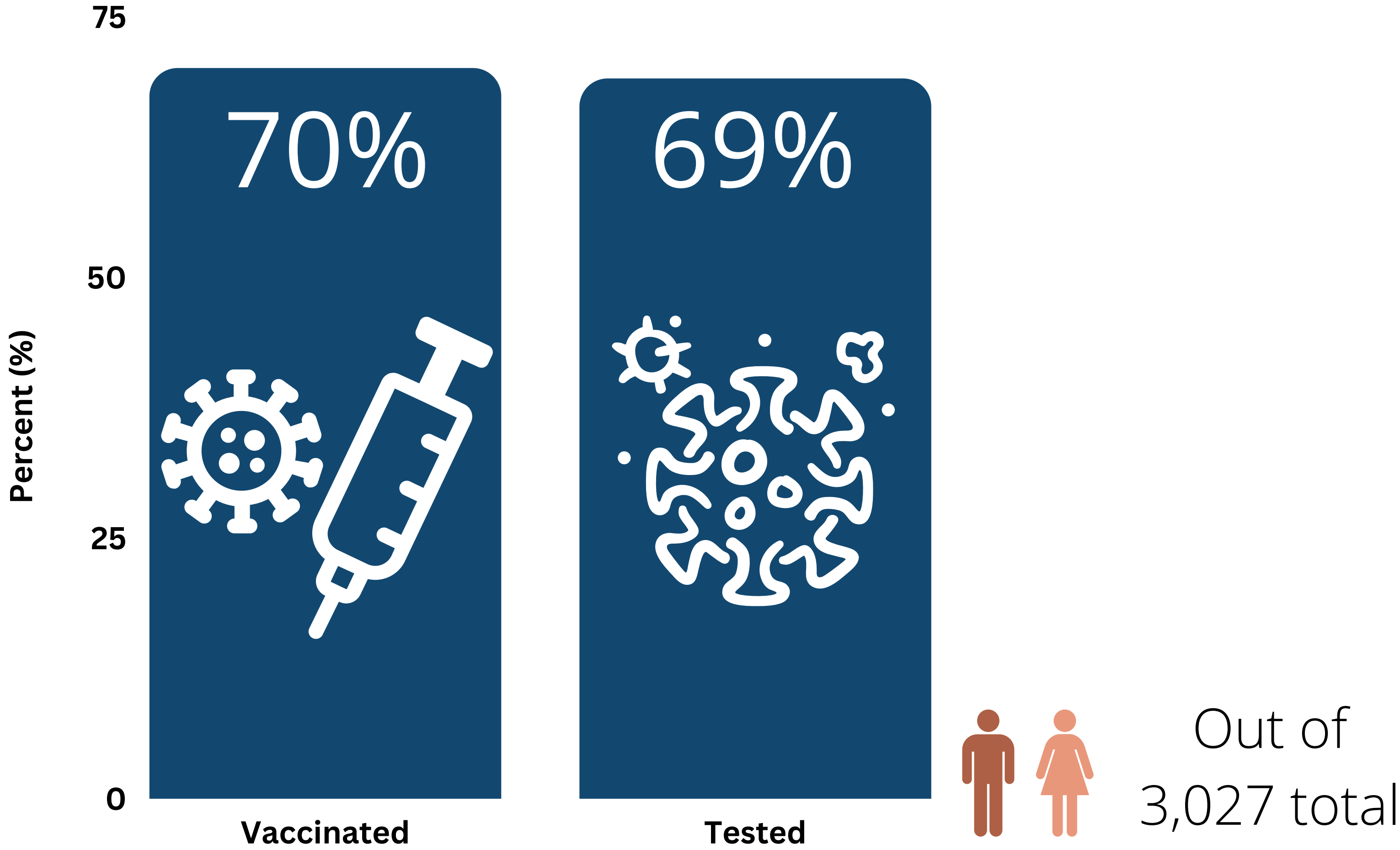
# Highest Level of Education Completed



# COVID-19 Awareness & Testing



# Vaccination & Testing



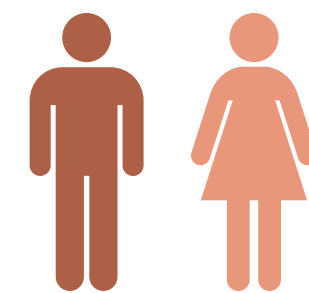


# How can COVID-19 be spread?

**76%** Contact with a **symptomatic** person

**76%** Contact with an **asymptomatic** person

**74%** Contact with surfaces touched by COVID-19



Out of 3,027  
total people

**Sources of  
information about  
COVID-19**

***What do you think***  
is the most popular  
source for getting  
COVID-19  
information?

- a) Religious leaders
- b) Doctors
- c) Co-workers
- d) Health workers
- e) Family and friends
- f) Community
- g) Government

**58%**

Family and friends



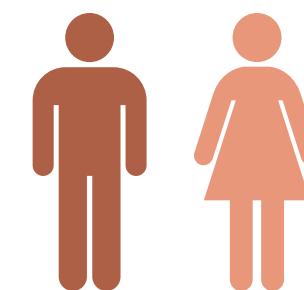
**53%**

Doctors



**46%**

Government



Out of 3,027  
total people



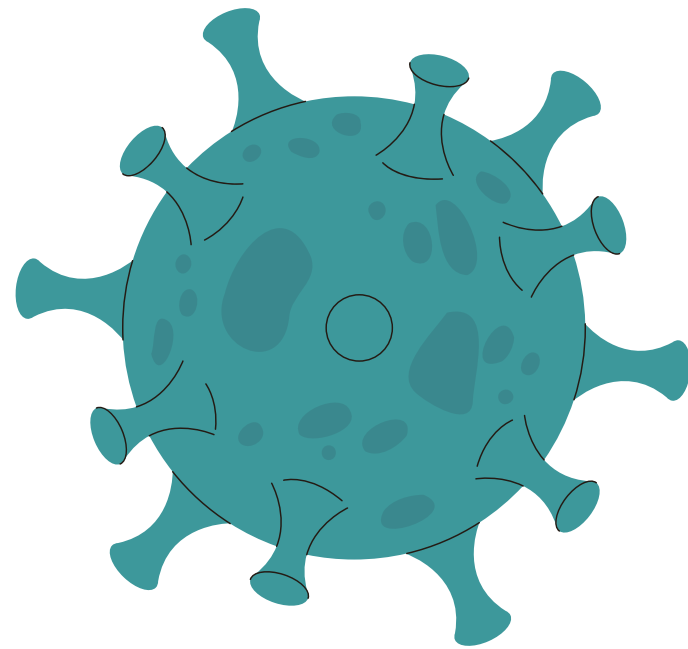
# **Perceived risk of COVID-19 infection**

***How likely do you  
think you will get  
COVID-19?***

- A) No chance
- B) Small chance
- C) Medium chance
- D) High chance
- E) Absolutely sure

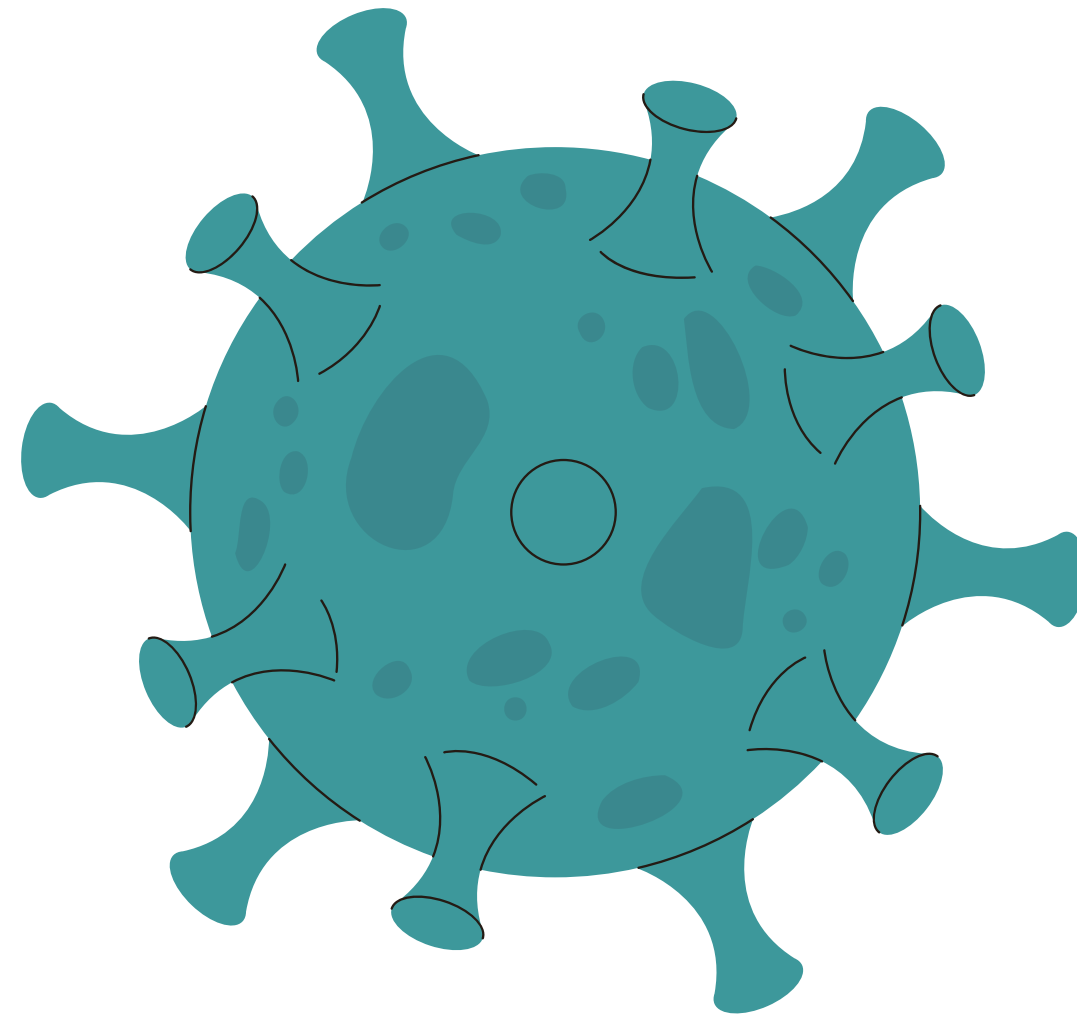
**27%**

Medium chance



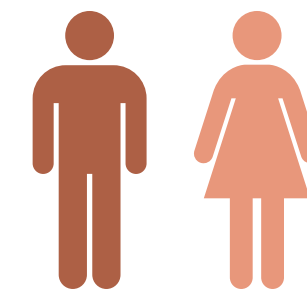
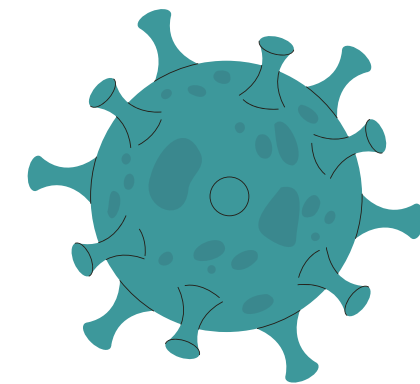
**22%**

High chance



**20%**

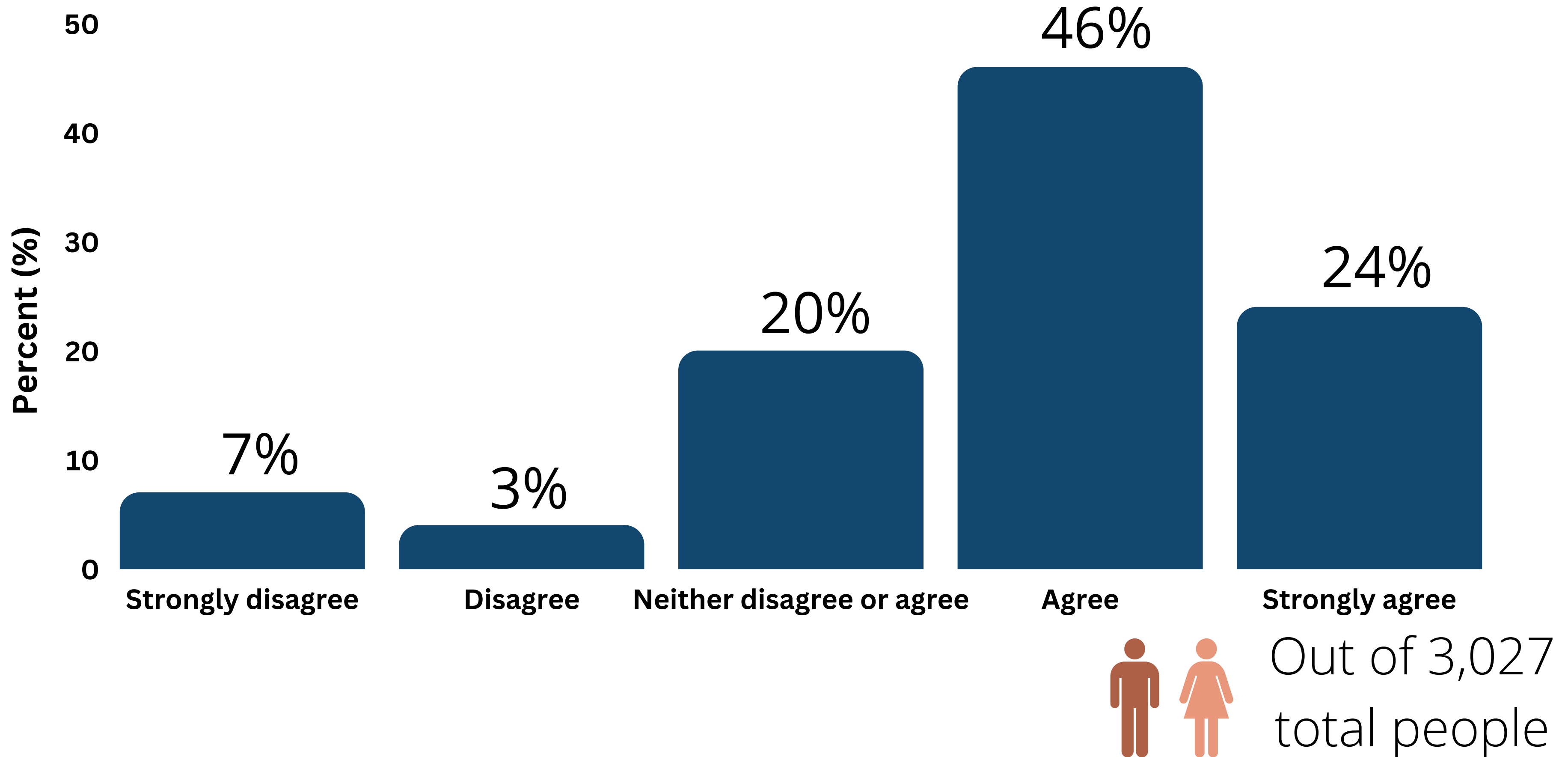
Small chance



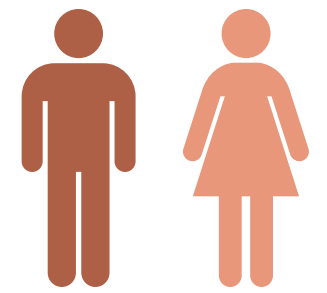
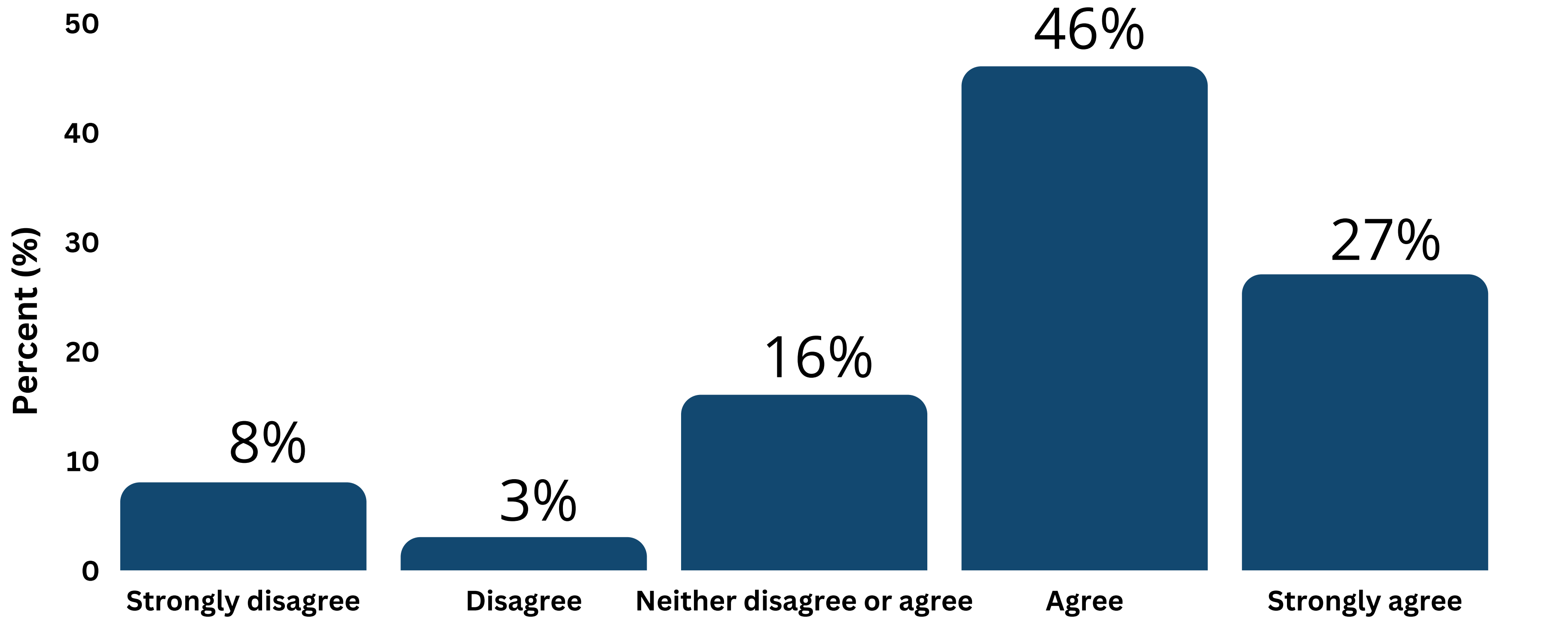
Out of 3,027  
total people

# **Access to COVID-19 testing**

# It is easy to get COVID-19 testing

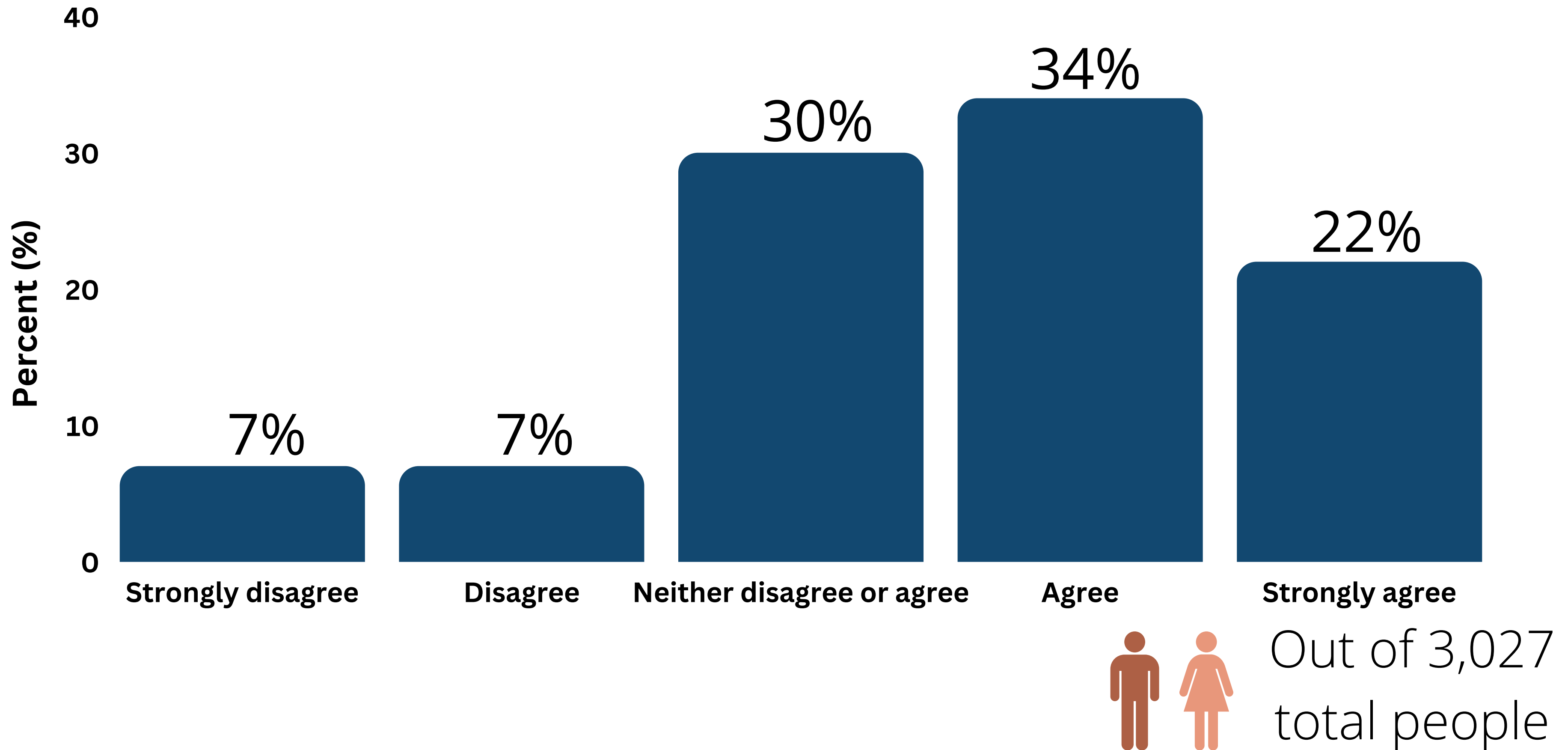


# I know where to get COVID-19 testing



Out of 3,027  
total people

# Intention to get COVID-19 testing



**99% out of 1,051  
were NEGATIVE  
for COVID-19!**



# Health Disparities



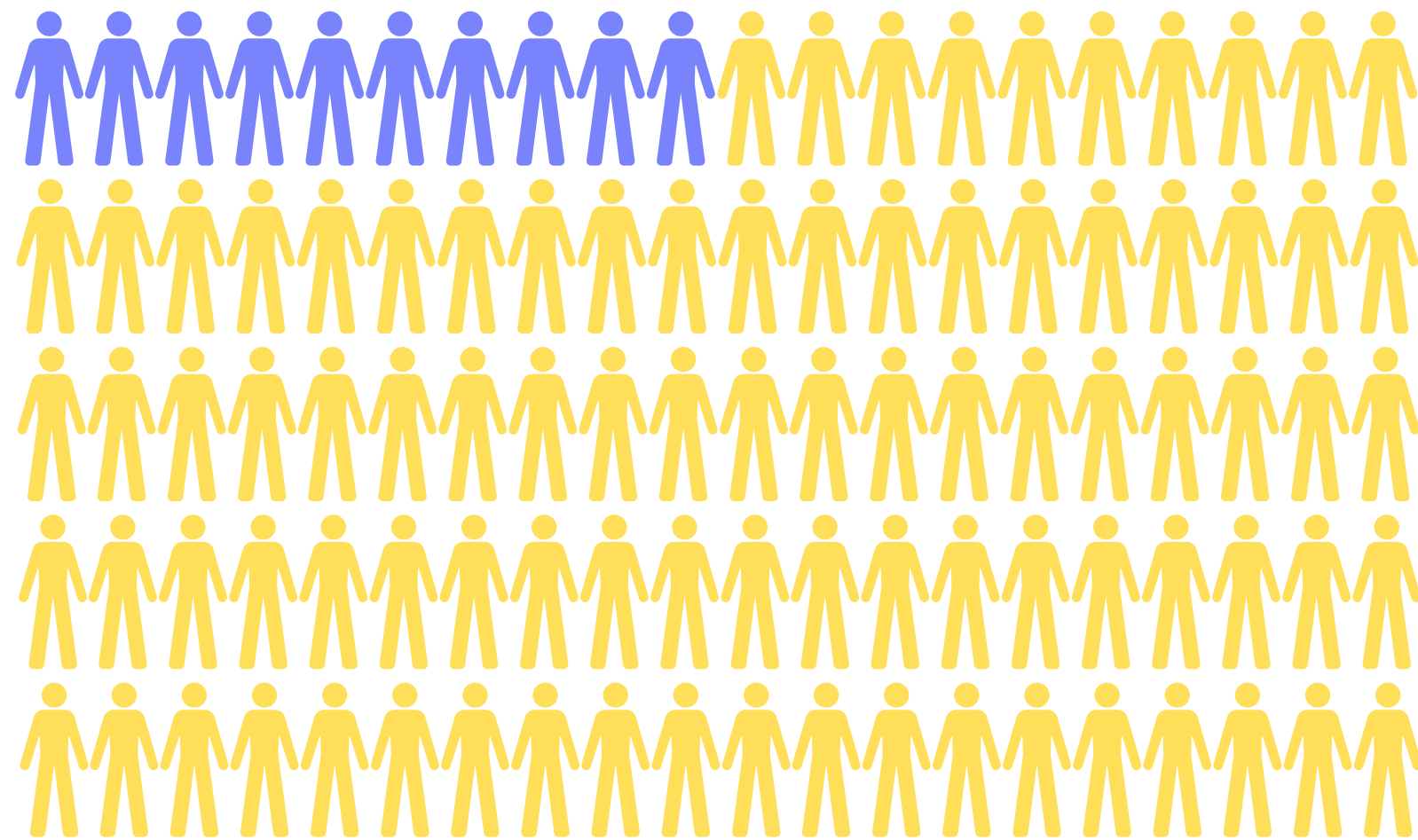
What are the  
**social determinants**  
of health?

And why should  
*we* care?

# Social Determinants of Health



# Overall diabetes in Hawai'i

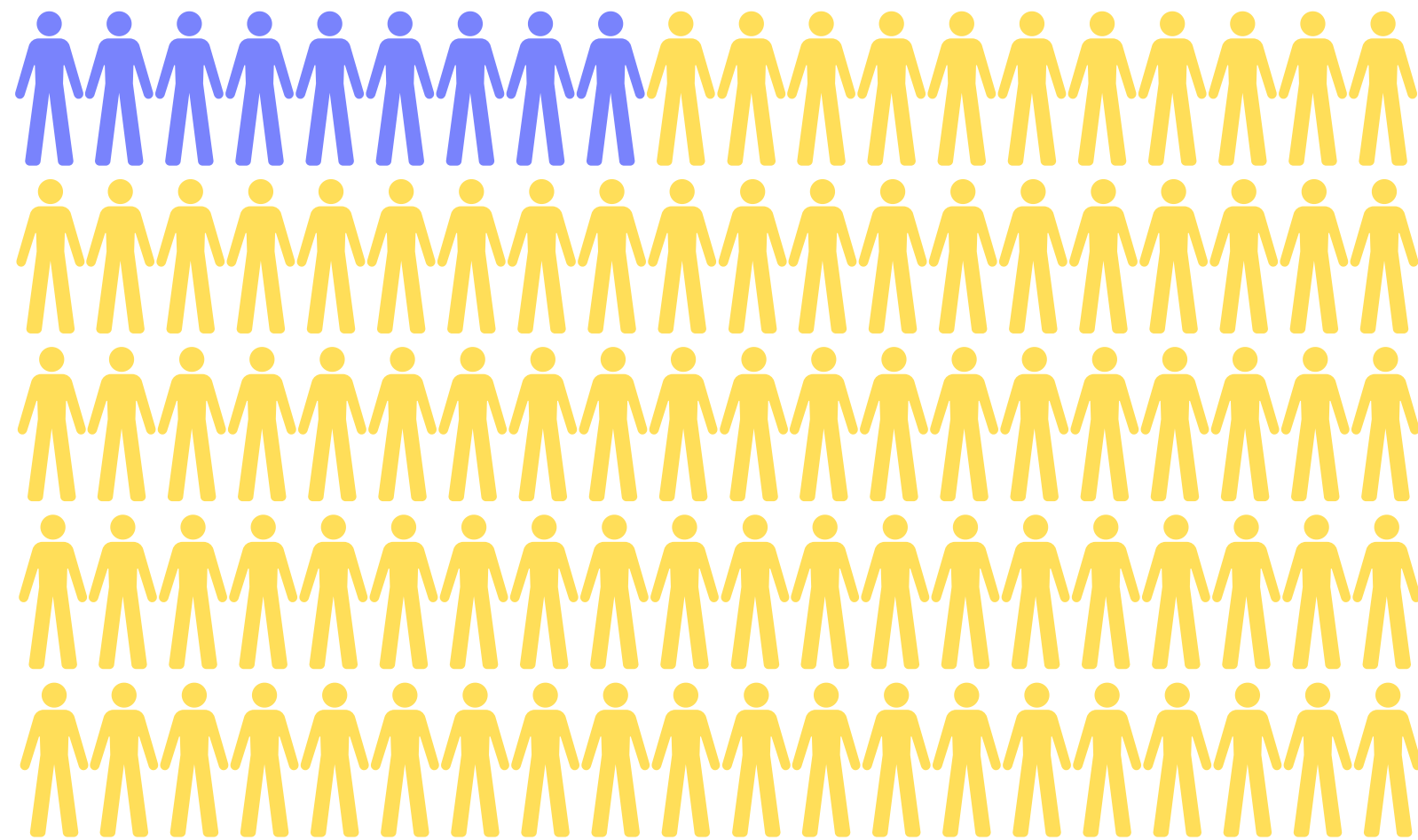


# PI diabetes in Hawai'i



Data as of  
2018-2020

# Overall asthma in Hawai'i

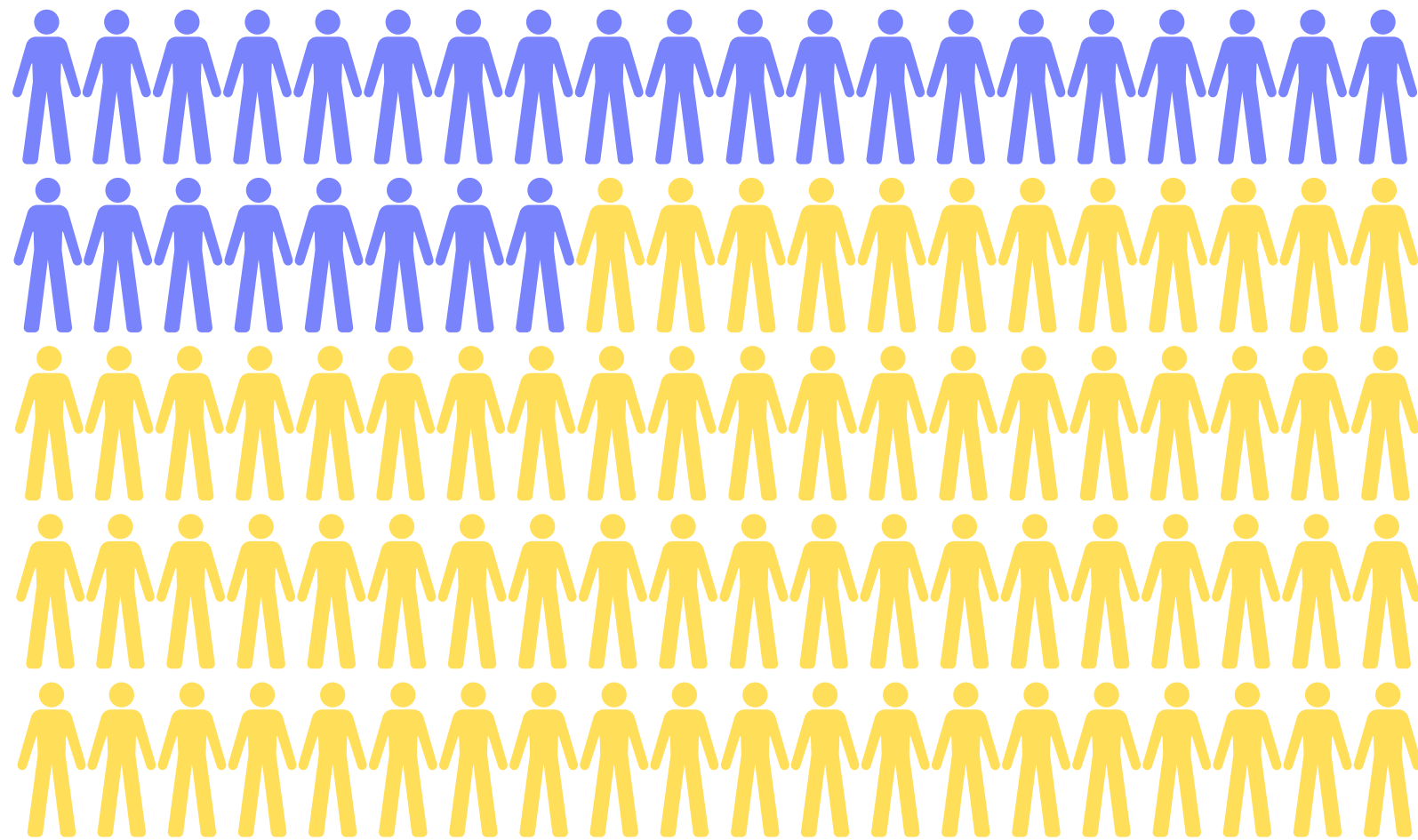


# PI asthma in Hawai'i

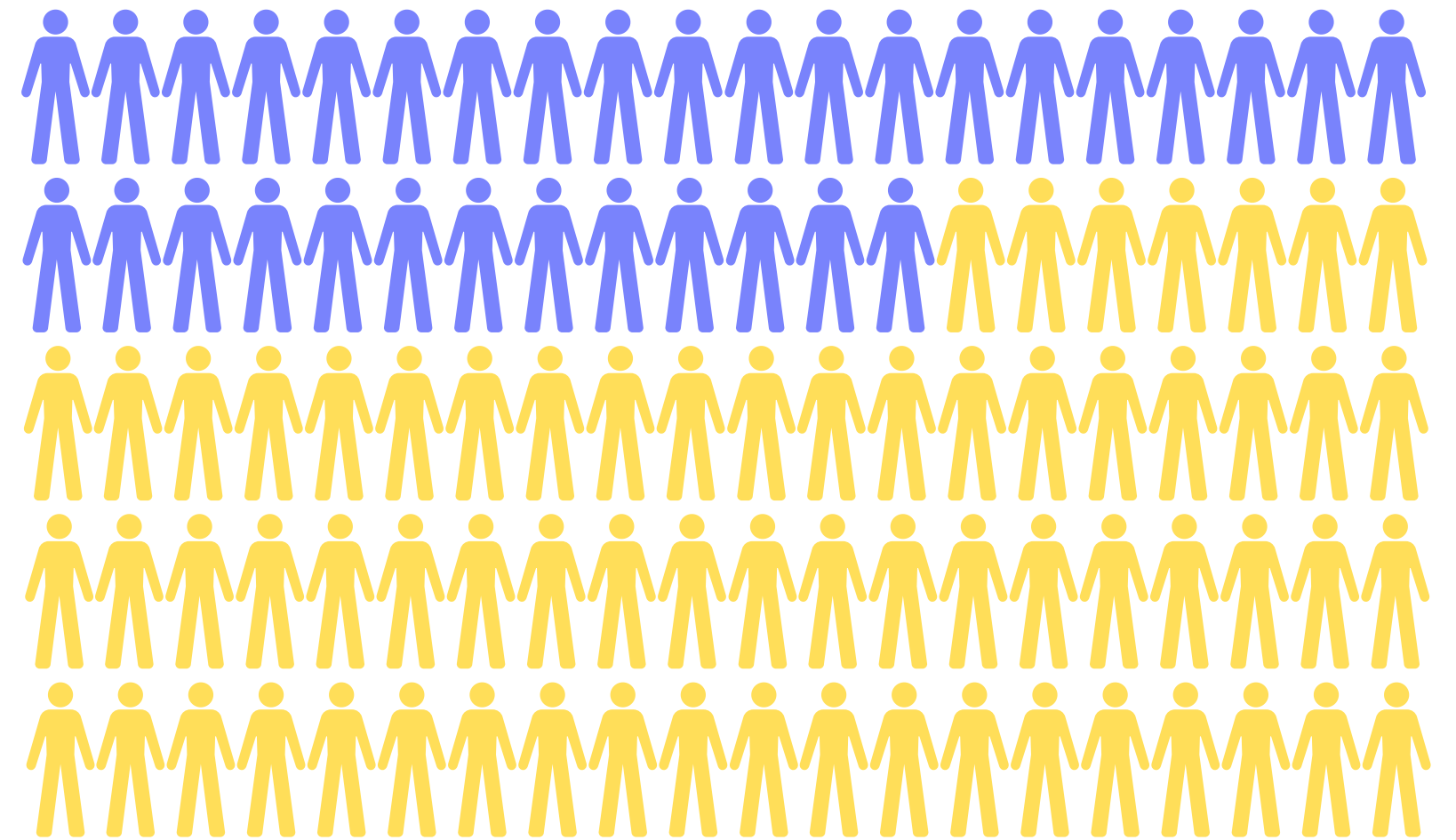


Data as of  
2018-2020

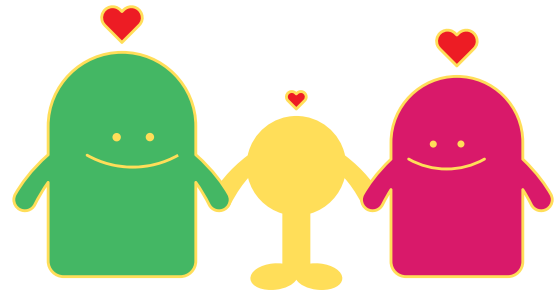
# Overall high blood pressure in Hawai'i



# PI high blood pressure in Hawai'i

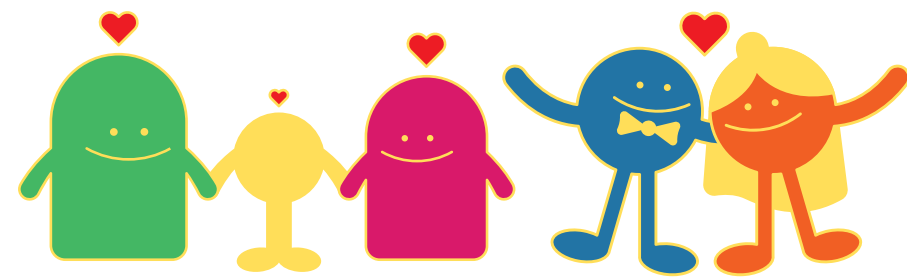


Data as of  
2017-2019



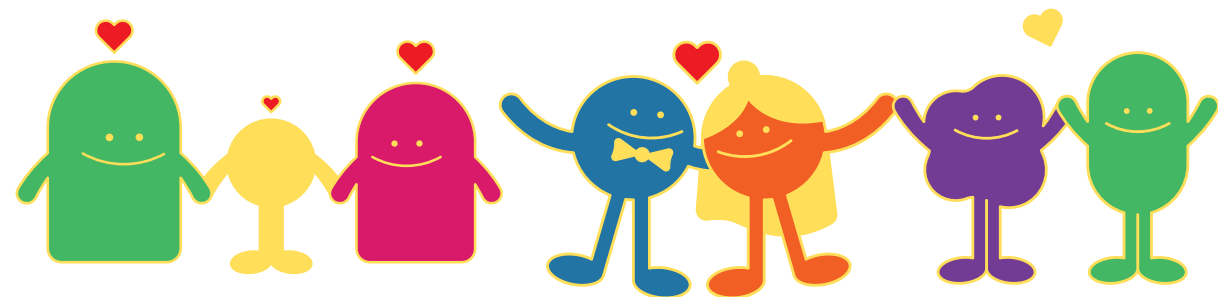
**60%**

Living with kids



**18%**

Living with parents, children,  
& grandparents



**1%**

Living with great-grandparents,  
parents, children, & grandparents

**31%**  
**lost income**  
**since the start**  
**of the pandemic**





# What can we do?





**To protect, provide, & give PI a voice!**

# Protect you, your family, & community

- Ask Field Assistant for a home COVID test
- Take a COVID-19 test regularly
- Encourage your family and friends to get tested!

Don't forget to take  
your *second survey!*

# Talk story

- Was there anything that surprised you?  
Why?
- Did you learn anything new?
- Do you have questions?
- What do you want to know more about?

*“I joined the Puipuia le Ola research study because I want to make a difference in my community...only by understanding how and why infection rates are so high among Pacific Islanders, can we learn how to do something about it”*

Hawai'i Pacific University Student, Puipuia le Ola Study Participant



**MAHALO!**



# Project Information



(808) 692-1685



puipuia@hawaii.edu

<https://manoa.hawaii.edu/puipuia/>



***Mahalo!***

