

¡CUÍDATE TEXAS!

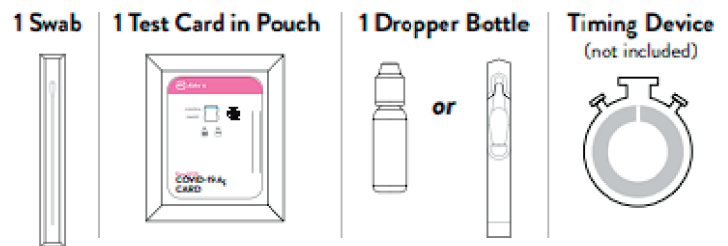
Taking Your COVID-19 BinaxNOW Test at Home



A nasal swab sample can be self-collected by an individual aged 15 years and older. Children aged 2 to 14 years should be tested by an adult. Tests can be performed by anyone who has symptoms, is potentially exposed to someone with COVID-19, or participates in high-risk activities (concerts, large outdoor gatherings, etc.).

BEFORE Taking Your Test:

- Wash or sanitize your hands. Make sure they are dry.
- Read all of the instructions/steps carefully before testing.
- Open kit and lay out contents: Swab, Test Card in Pouch, Dropper Bottle, and a Timing Device (not included).



Instructions for Collecting Your Test:

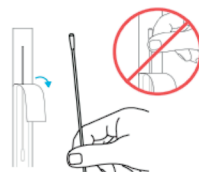
1. Remove test card from pouch and make sure the **blue control line** is present in the result window. **Do Not** use the card if it is not. Open the card and lay it flat on the table with the pink side down. Card must stay flat on table the entire test.
2. Remove dropper bottle cap. Hold dropper bottle straight over top hole of test card, not at an angle. Put 6 drops into the top hole. Do not touch card with tip of dropper.
3. Open swab package at stick end. Take swab out holding it at the stick end.
4. **Swab both nostrils carefully.** Insert the entire soft tip of the swab into a nostril (usually 1/2 to 3/4 of an inch). You do not need to go deeper. Using medium pressure, rub the swab against all of the inside walls of your nostril. Make at least 5 big circles for 15 seconds. Repeat in the other nostril.
5. Insert swab tip into lower hole on the test card. Firmly push the swab tip from the lower hole until it is visible in the top hole. **Do not** remove the swab from the card. Turn swab right 3 times to mix the swab with the drops. Leave the swab in the card for the remainder of the test.
6. Peel adhesive liner off and close left side of test card over swab. Press firmly to seal test card.
7. Wait **15 minutes**. Read the results at 15 minutes. Do not read the results before 15 minutes or after 30 minutes.



Step 1



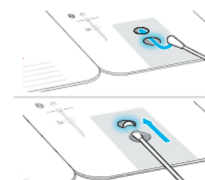
Step 2



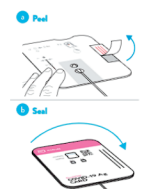
Step 3



Step 4



Step 5



Step 6&7

Checking Your Results:

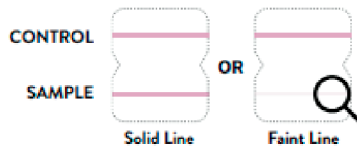
- The TEST card should be read after **15 minutes**.
- Do not read before 15 minutes or after 30 minutes to avoid inaccurate results.
- Check your results using the examples provided below:
 - Note: "**Control**" represents the control line and the "**Sample**" the test line.
 - A **Control** line must ALWAYS be present for it to be considered VALID.



Scan the QR code with your cell phone camera for more about BinaxNOW.

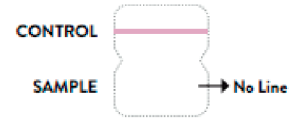
Positive

A **POSITIVE** result will show both the **control** and **sample** lines turn pink/purple.



Negative

A **NEGATIVE** result will ONLY show the **control** line and no sample line.



Invalid

An **INVALID** result will fail to show a control line, no lines or blue control line. Please take a new test.



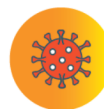
After Taking Your Test:

- Throw away all used testing kit items.
- *If your test is positive*, reach out to your healthcare provider for guidance.

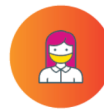
Testing Tips

- Wear safety masks when testing others.
- Keep test kits out of reach of children and pets.
- The FDA has extended expiration dates on some test kits. Visit go.uth.edu/test-expirations for more information.
- Do not open the test kit until ready for use.
- Do not reuse ANY materials from testing kit

Help Stop the Spread



Get your COVID-19 vaccine and booster.



Wear a mask in public and social distance.



Go to a COVID-19 testing site or take self-test when needed.



If you develop symptoms or test positive for COVID-19, self-isolate until you recover.



@TakeCareRGV • TakeCareTexas.Org • COVID.gov

bit.ly/CameronCovid19 • (956)-247-3650

UTHealth
Houston | School of
Public Health